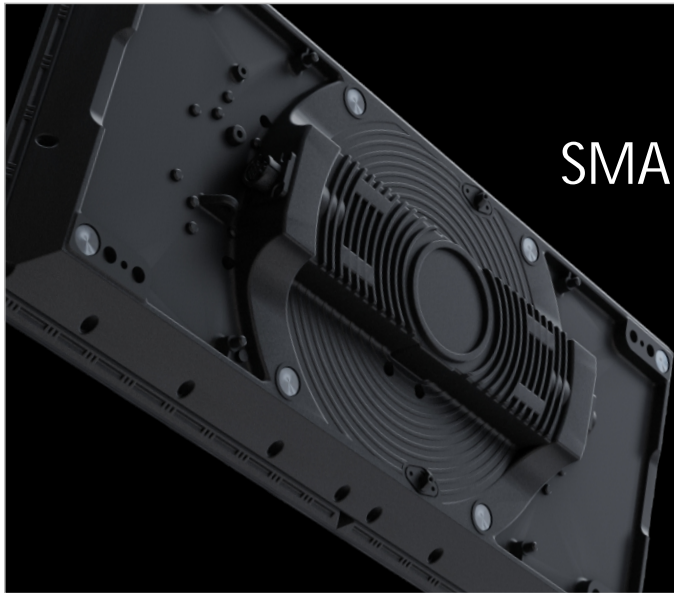


SMART BLOCK-PLUS Series



SMART BLOCK-PLUS series display: flexible installation, high protection, light weight, front servicing, being able to have quick assembling methods like hanging method, standing method, laying against wall; supporting flat and curve surface. It is perfect to fit show window and outdoor

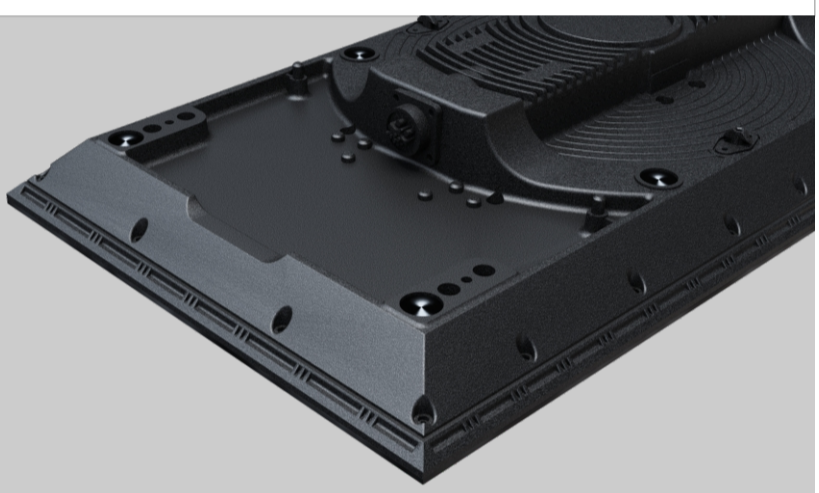
Industrial Beauty

Light, Thin and Strong, both outer and inner beauty
Aviation aluminum alloy, die-casting molding

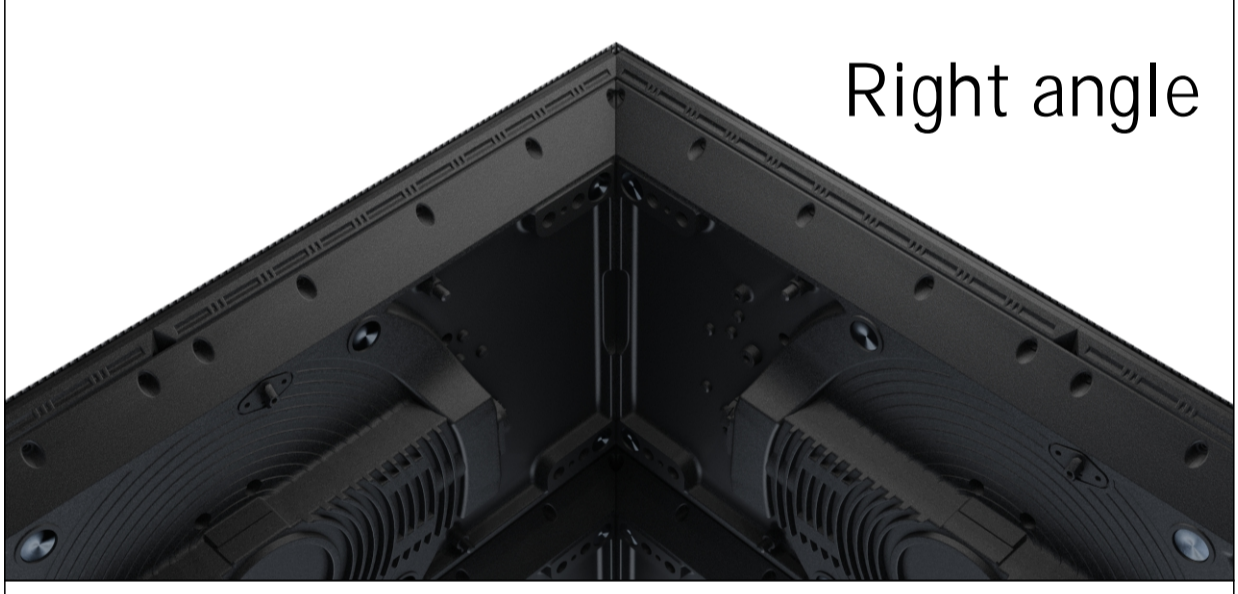
Strong magnetic suction



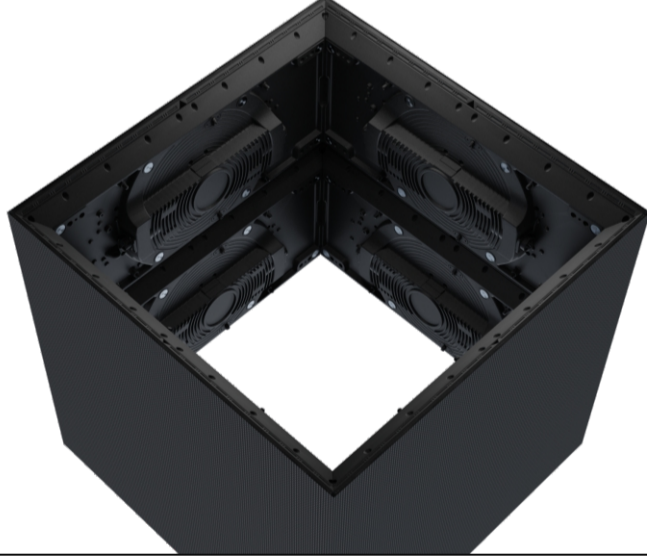
45° Bevel edge design
Cube, square, circle shape are possible



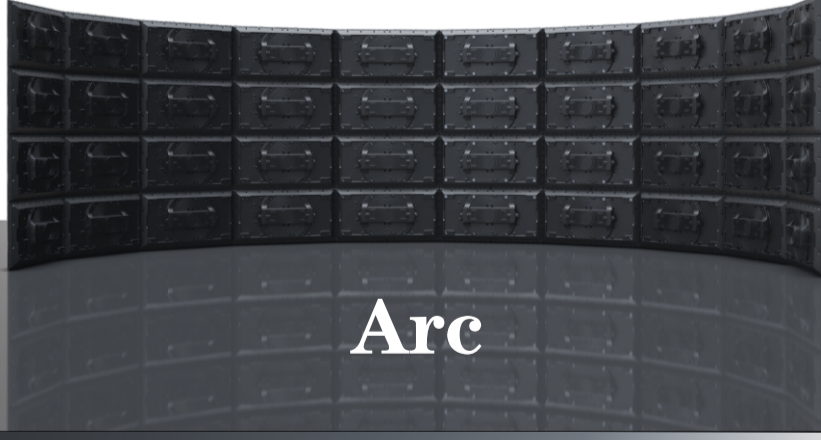
Right angle



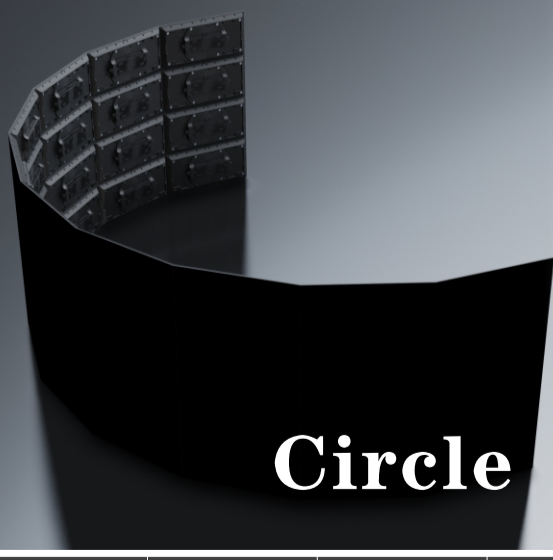
LED cube



Arc



Circle



| | P2 | P2i | P3 | P3i | | |
|--------------------------------|---------------------------|---------------------------|----------------------|----------------------|--|--|
| Pixel Pitch (mm) | 2.97mm | 2.97mm | 3.91mm | 3.91mm | | |
| Module Size | 250*250mm | 250*250mm | 250*250mm | 250*250mm | | |
| Module Resolution | 84*84 pixels | 84*84 pixels | 64*64 pixels | 64*64 pixels | | |
| Module Assembly | 1*2/2*1 | 1*2/2*1 | 1*2/2*1 | 1*2/2*1 | | |
| Panel Size | 250*500mm/500*250 | 250*500mm/500*250 | 250*500mm/500*250 | 250*500mm/500*250 | | |
| Panel Resolution | 84*168pixels/168*84pixels | 84*168pixels/168*84pixels | 64*128/128*64pixels | 64*128/128*64pixels | | |
| LED Type | SMD 1415 | SMD 1515 | SMD 1921 | SMD 2020 | | |
| Brightness | 5000nits | 1000nits | 5000nits | 1000nits | | |
| Horizontal Viewing Angle | 140° | 140° | 140° | 140° | | |
| Vertical Viewing Angle | 140° | 140° | 140° | 140° | | |
| Weight (kg/pcs) | 3.5kg/pcs | 3.2kg/pcs | 3.5kg/pcs | 3.2kg/pcs | | |
| IP (Front/Reverse) | IP66 | IP42 | IP66 | IP42 | | |
| Max.AC Power Consumption | 97W/PC | 78W/PC | 97W/PC | 78W/PC | | |
| Input Voltage (V) | 100-240V AC, 50-60Hz | 100-240V AC, 50-60Hz | 100-240V AC, 50-60Hz | 100-240V AC, 50-60Hz | | |
| Operating Temperature/Humidity | -30°~+55°/10~80% RH | -30°~+55°/10~80% RH | -30°~+55°/10~80% RH | -30°~+55°/10~80% RH | | |
| Storage Temperature/Humidity | -40°~+80°/10~90% RH | -40°~+80°/10~90% RH | -40°~+80°/10~90% RH | -40°~+80°/10~90% RH | | |